

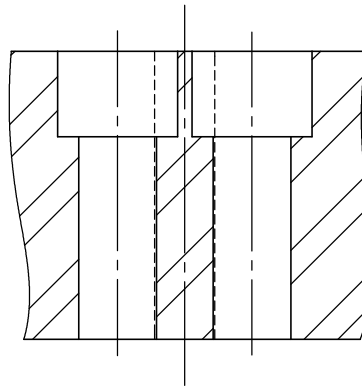
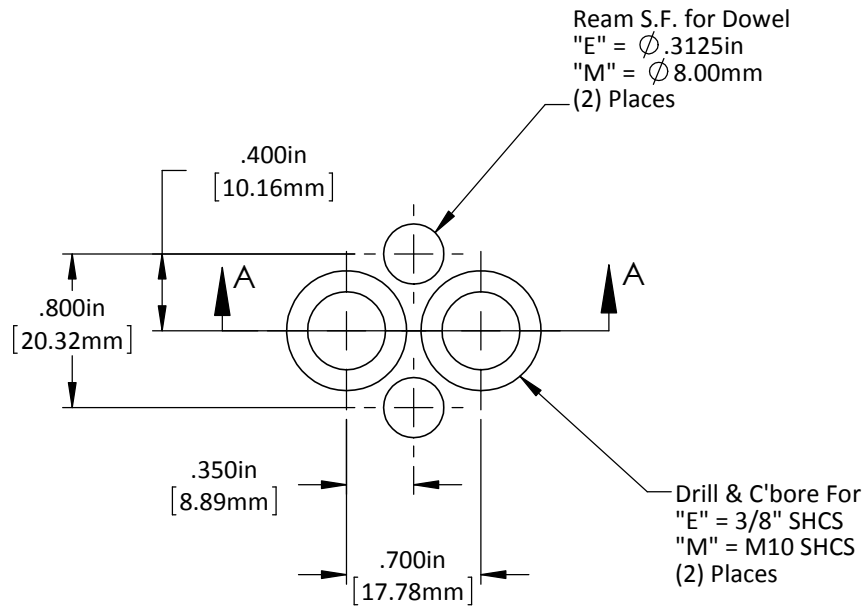
DO NOT SCALE DRAWING

REV 1

This product may be covered by one or more patents or patent applications.  
 See <http://www.standardlifters.com/patents.html> for details.

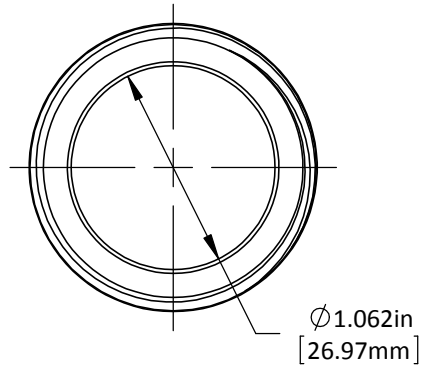
**Guide Pin SL25**

**STANDARD LIFTERS INC**

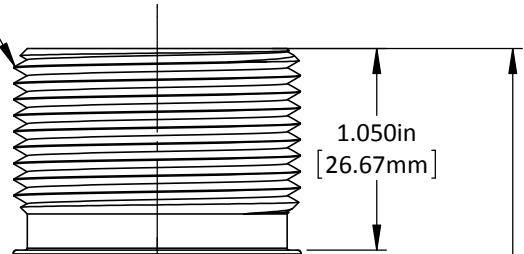


DO NOT SCALE DRAWING	REV 1
This product may be covered by one or more patents or patent applications. See <a href="http://www.standardlifters.com/patents.html">http://www.standardlifters.com/patents.html</a> for details.	

**Guide Pin SL25-Machining**  
**STANDARD LIFTERS INC**

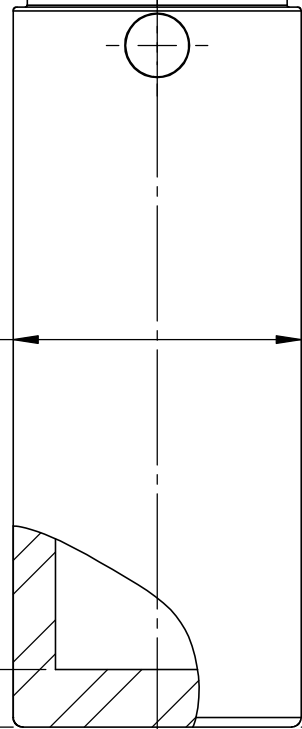


1 1/2"-12 Thread

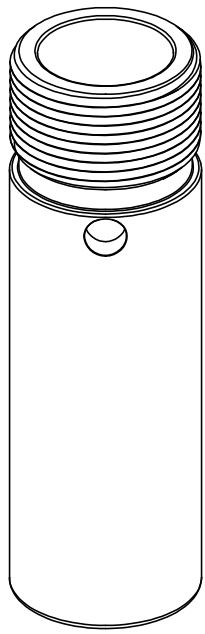


Spring Can  
Overall Length  
2.8" Min. - 12.3" Max.  
.5" Increments

$\text{Ø}1.500\text{in}$   
[38.10mm]

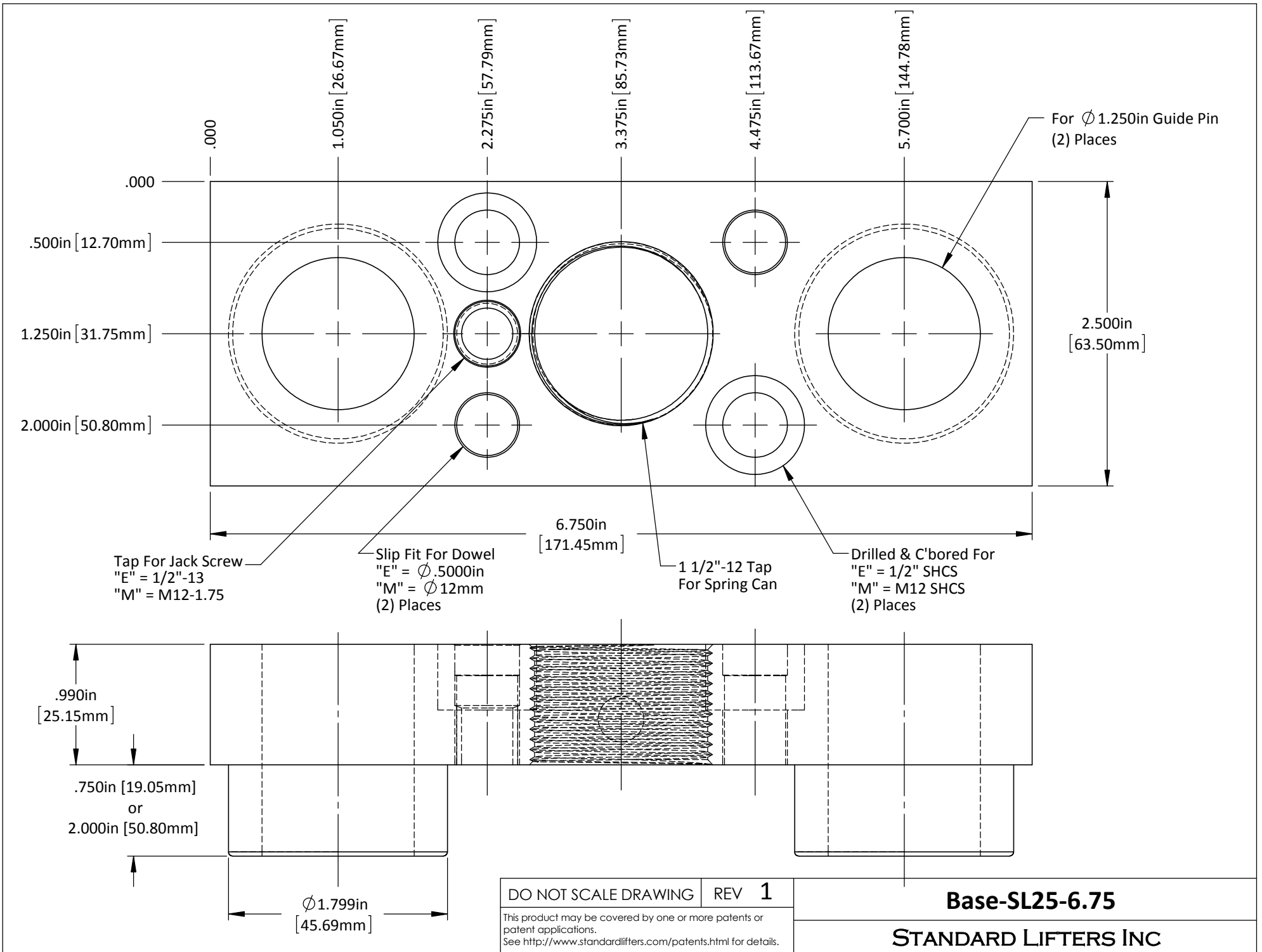


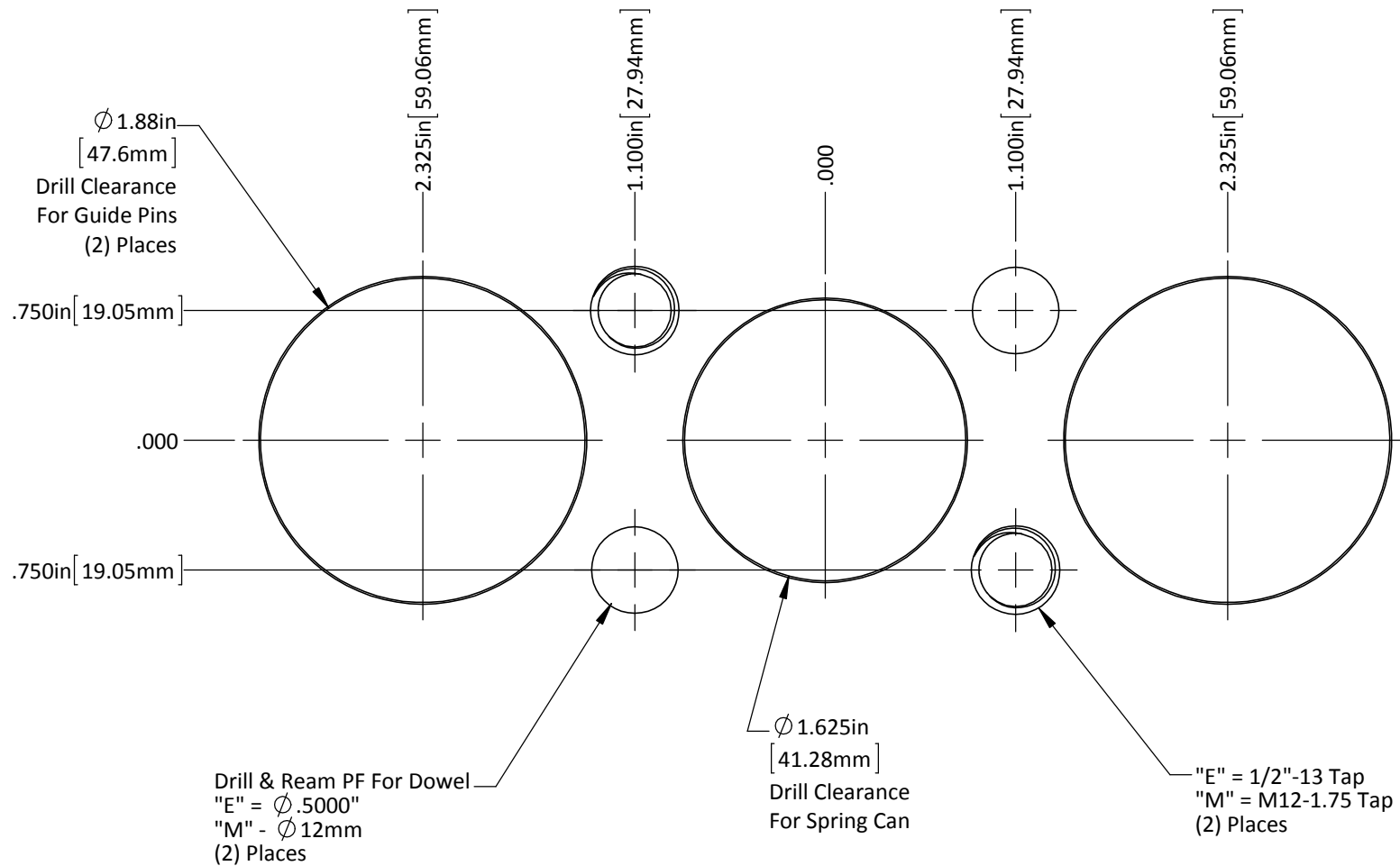
.300in  
[7.62mm]



DO NOT SCALE DRAWING    REV 1  
This product may be covered by one or more patents or patent applications.  
See <http://www.standardlifters.com/patents.html> for details.

**Spring Can-MSR100**  
**STANDARD LIFTERS INC**





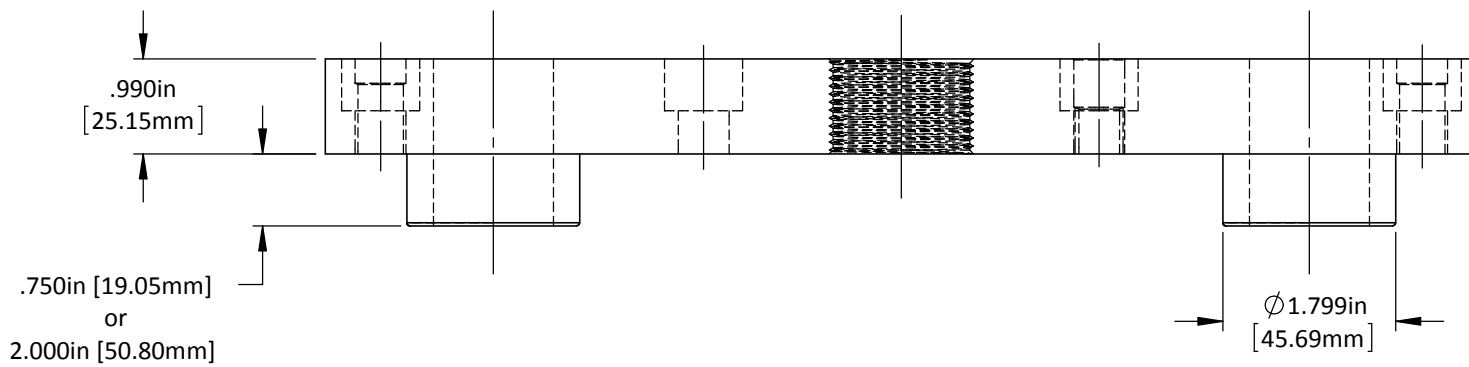
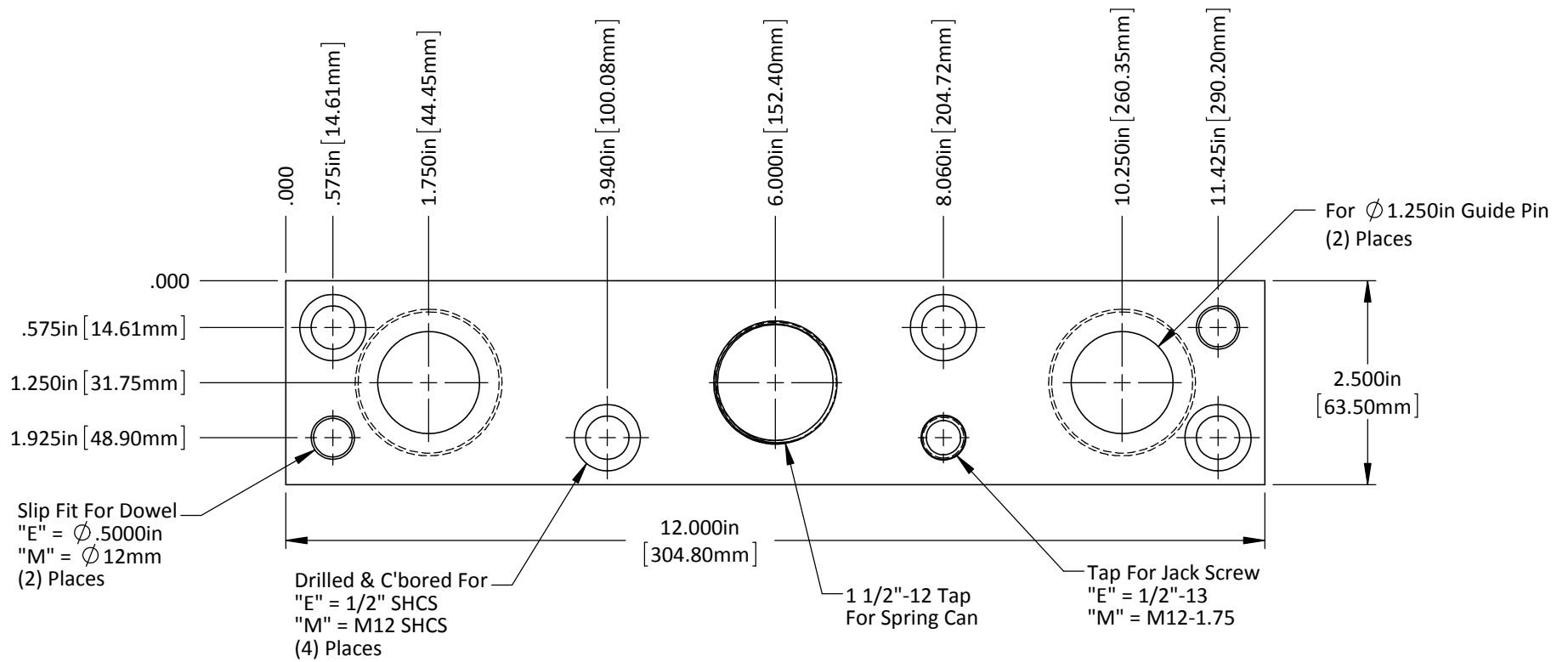
DO NOT SCALE DRAWING

REV 1

This product may be covered by one or more patents or patent applications.  
 See <http://www.standardlifters.com/patents.html> for details.

**Base-SL25-6.75-Machining**

**STANDARD LIFTERS INC**



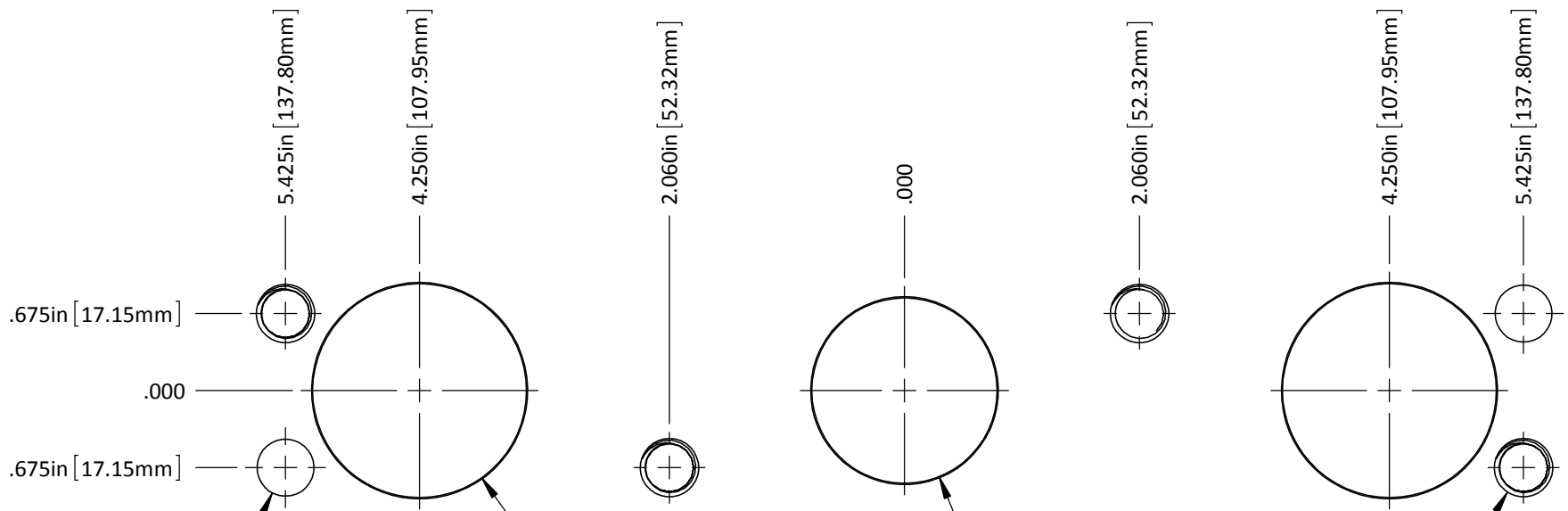
DO NOT SCALE DRAWING

REV 1

This product may be covered by one or more patents or  
 patent applications.  
 See <http://www.standardlifters.com/patents.html> for details.

**Base-SL25-12**

**STANDARD LIFTERS INC**



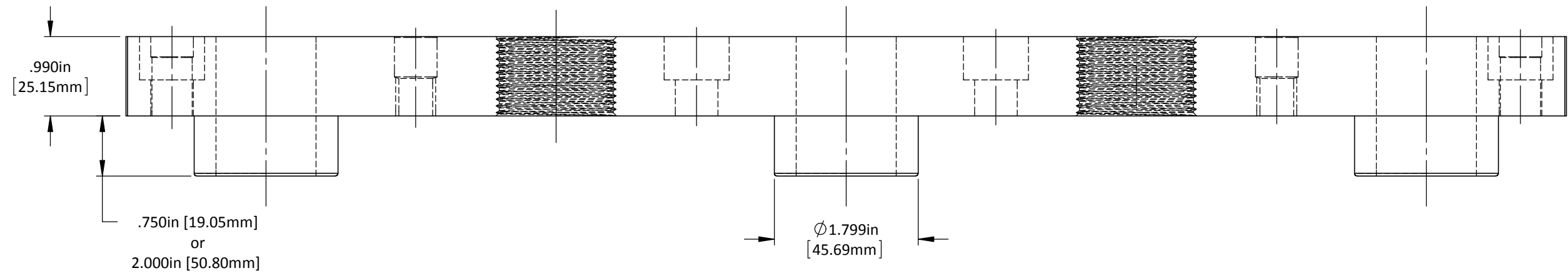
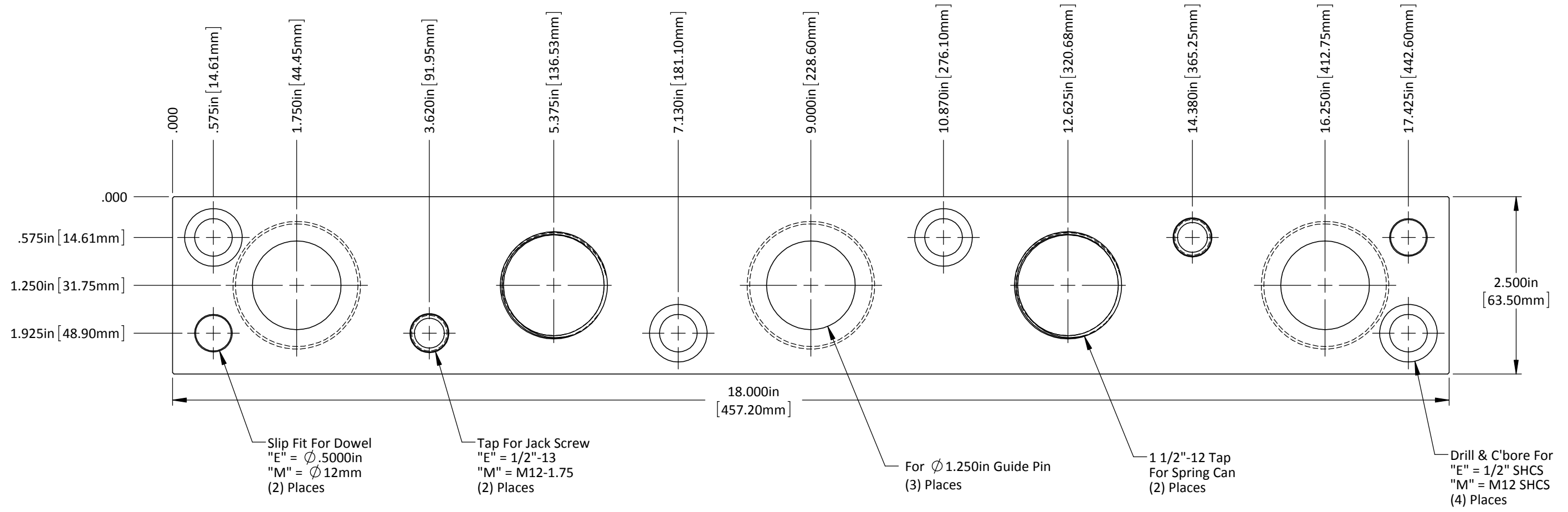
Drill & Ream PF For Dowel  
 "E" =  $\varnothing$ .5000in  
 "M" -  $\varnothing$ 12mm  
 (2) Places

$\varnothing$ 1.88in  
 [47.6mm]  
 Drill Clearance  
 For Guide Pins  
 (2) Places

$\varnothing$ 1.63in  
 [41.3mm]  
 Drill Clearance  
 For Spring Can

"E" = 1/2"-13 Tap  
 "M" = M12-1.75 Tap  
 (4) Places

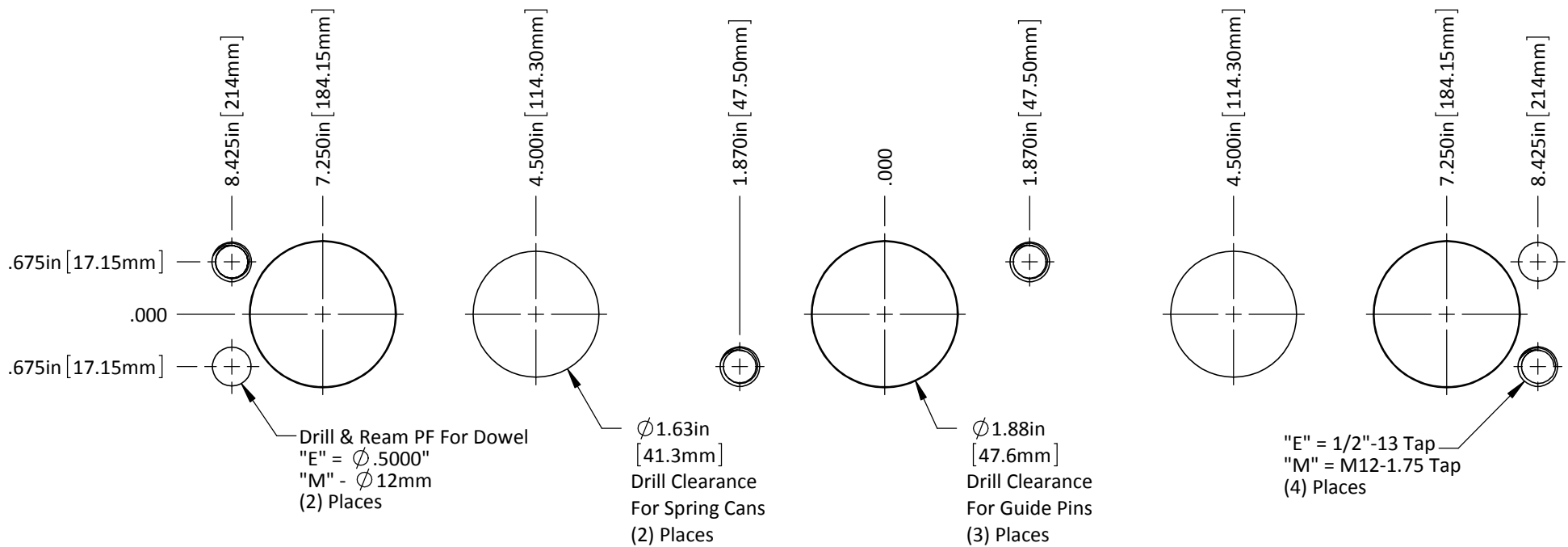
DO NOT SCALE DRAWING	REV 1	<b>Base-SL25-12-Machining</b> <b>STANDARD LIFTERS INC</b>
This product may be covered by one or more patents or patent applications. See <a href="http://www.standardlifters.com/patents.html">http://www.standardlifters.com/patents.html</a> for details.		



DO NOT SCALE DRAWING REV 1  
 This product may be covered by one or more patents or patent applications.  
 See <http://www.standardlifters.com/patents.html> for details.

**Base-SL25-18**  
**STANDARD LIFTERS INC**





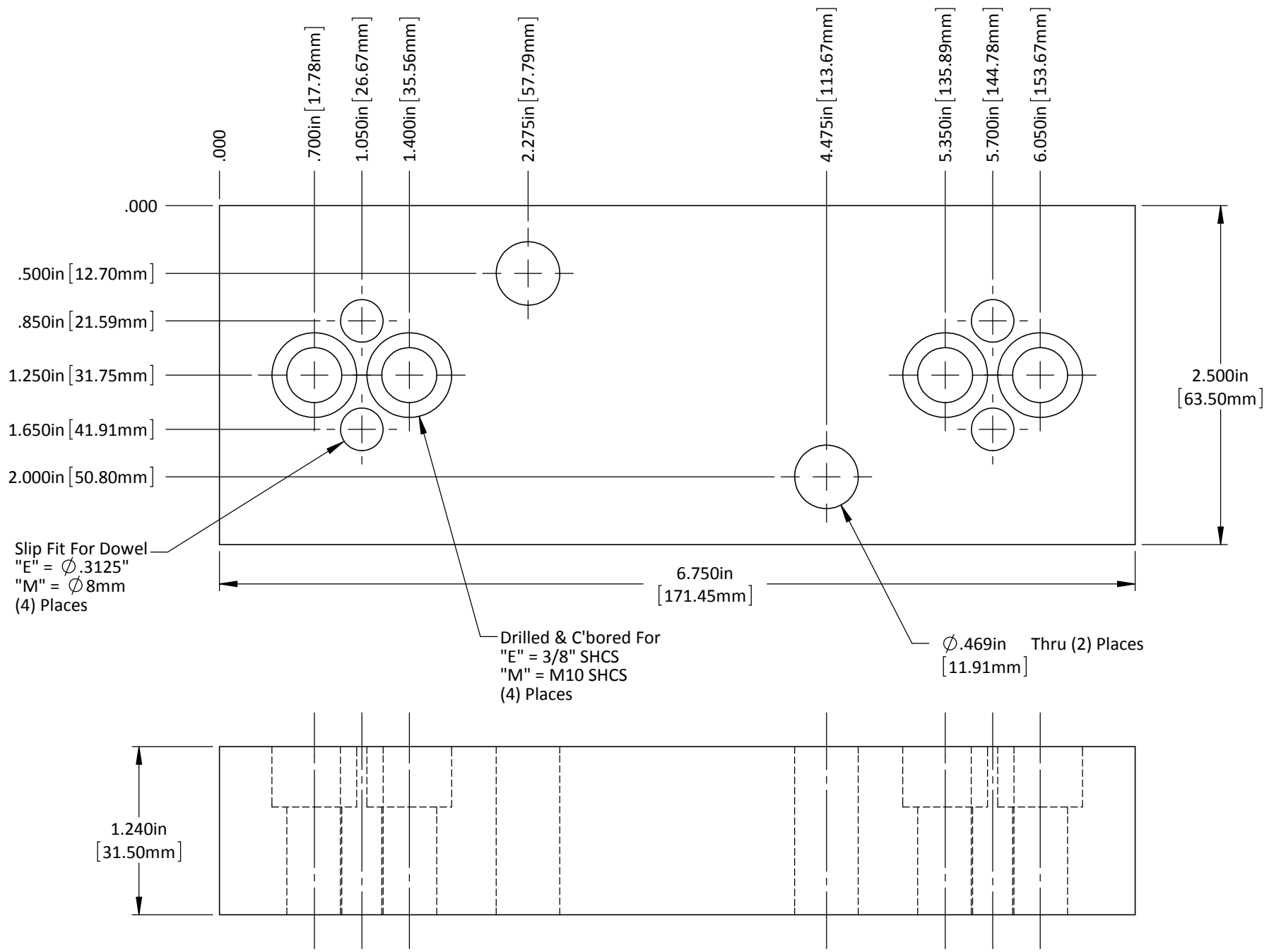
DO NOT SCALE DRAWING

REV 1

This product may be covered by one or more patents or patent applications.  
See <http://www.standardlifters.com/patents.html> for details.

**Base-SL25-18-Machining**

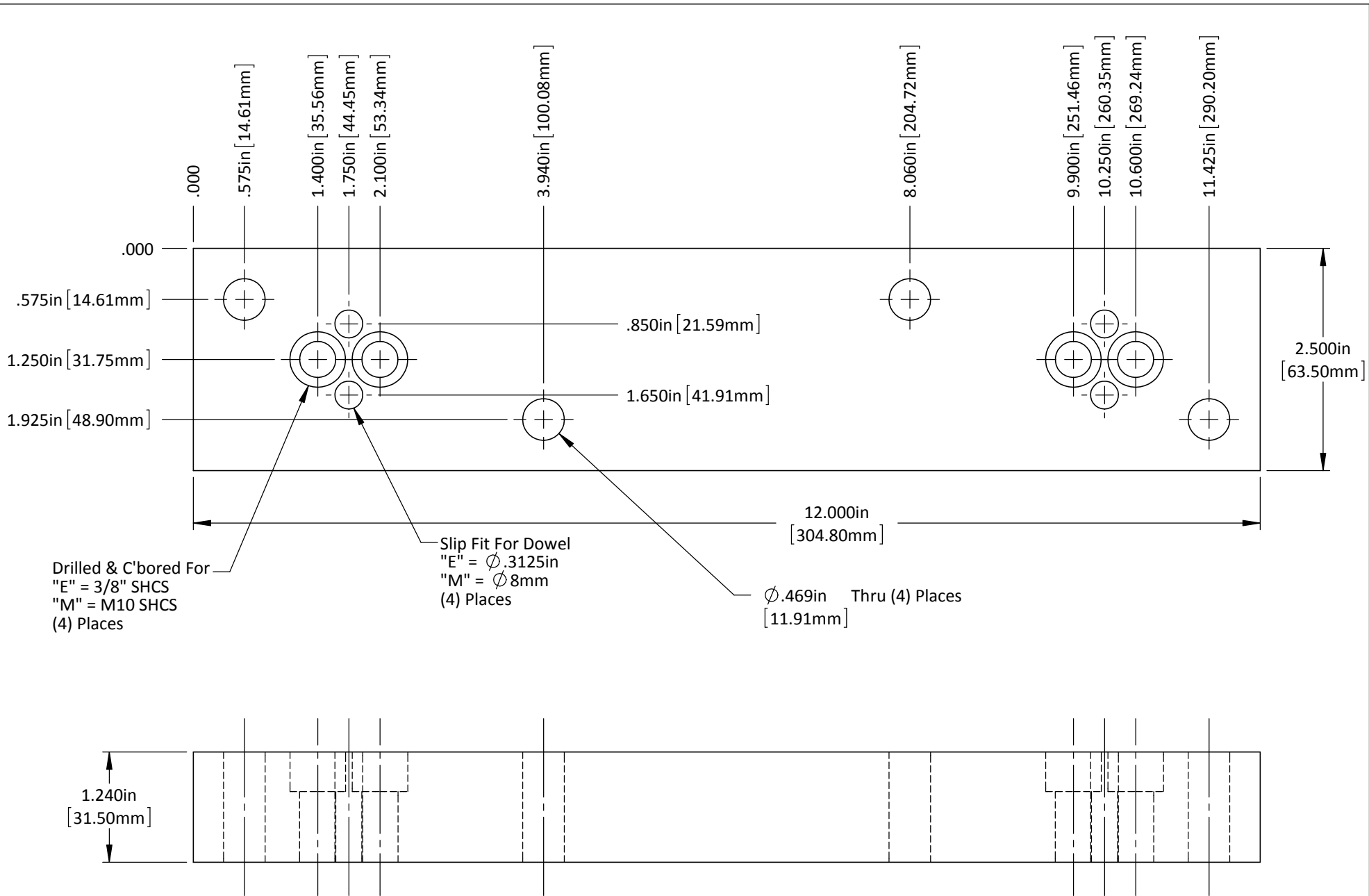
**STANDARD LIFTERS INC**



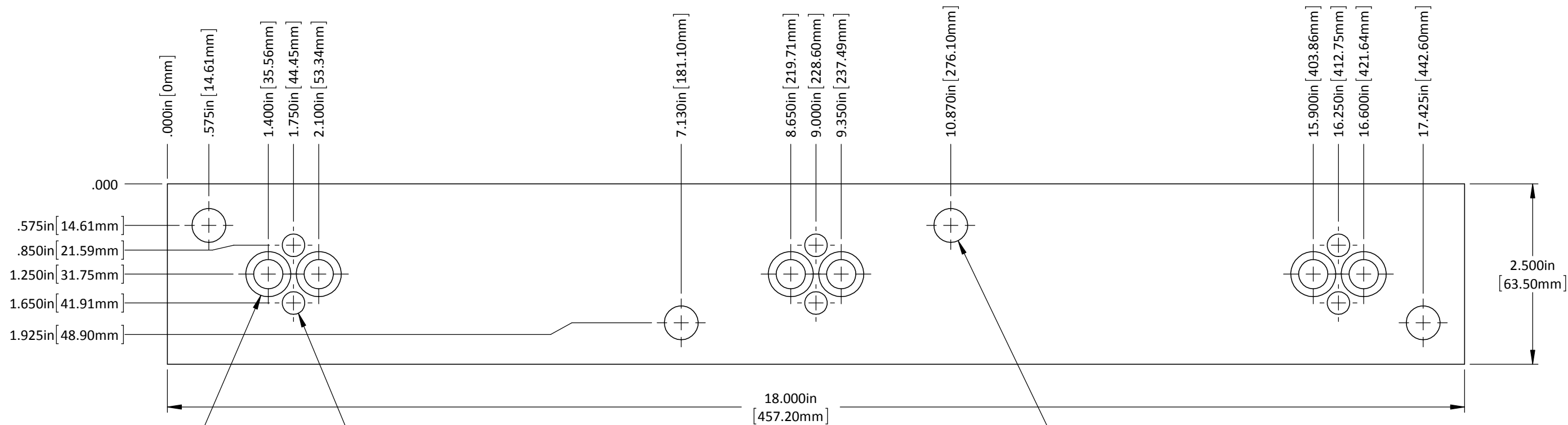
Slip Fit For Dowel  
 "E" =  $\varnothing .3125$ "  
 "M" =  $\varnothing 8$ mm  
 (4) Places

Drilled & C'bored For  
 "E" =  $3/8$ " SHCS  
 "M" = M10 SHCS  
 (4) Places

$\varnothing .469$ in Thru (2) Places  
 [11.91mm]



DO NOT SCALE DRAWING	REV 1	<b>Top Plate-SL25-12-A</b>
This product may be covered by one or more patents or patent applications. See <a href="http://www.standardlifters.com/patents.html">http://www.standardlifters.com/patents.html</a> for details.		



Drilled & C'bored For  
 "E" = 3/8" SHCS  
 "M" = M10 SHCS  
 (6) Places

Slip Fit For Dowel  
 "E" =  $\varnothing$ .3125in  
 "M" =  $\varnothing$  8mm  
 (6) Places

$\varnothing$ .469in Thru (4) Places  
 [11.91mm]

