



STANDARDLIFTERS

MAKING INNOVATION THE STANDARD®

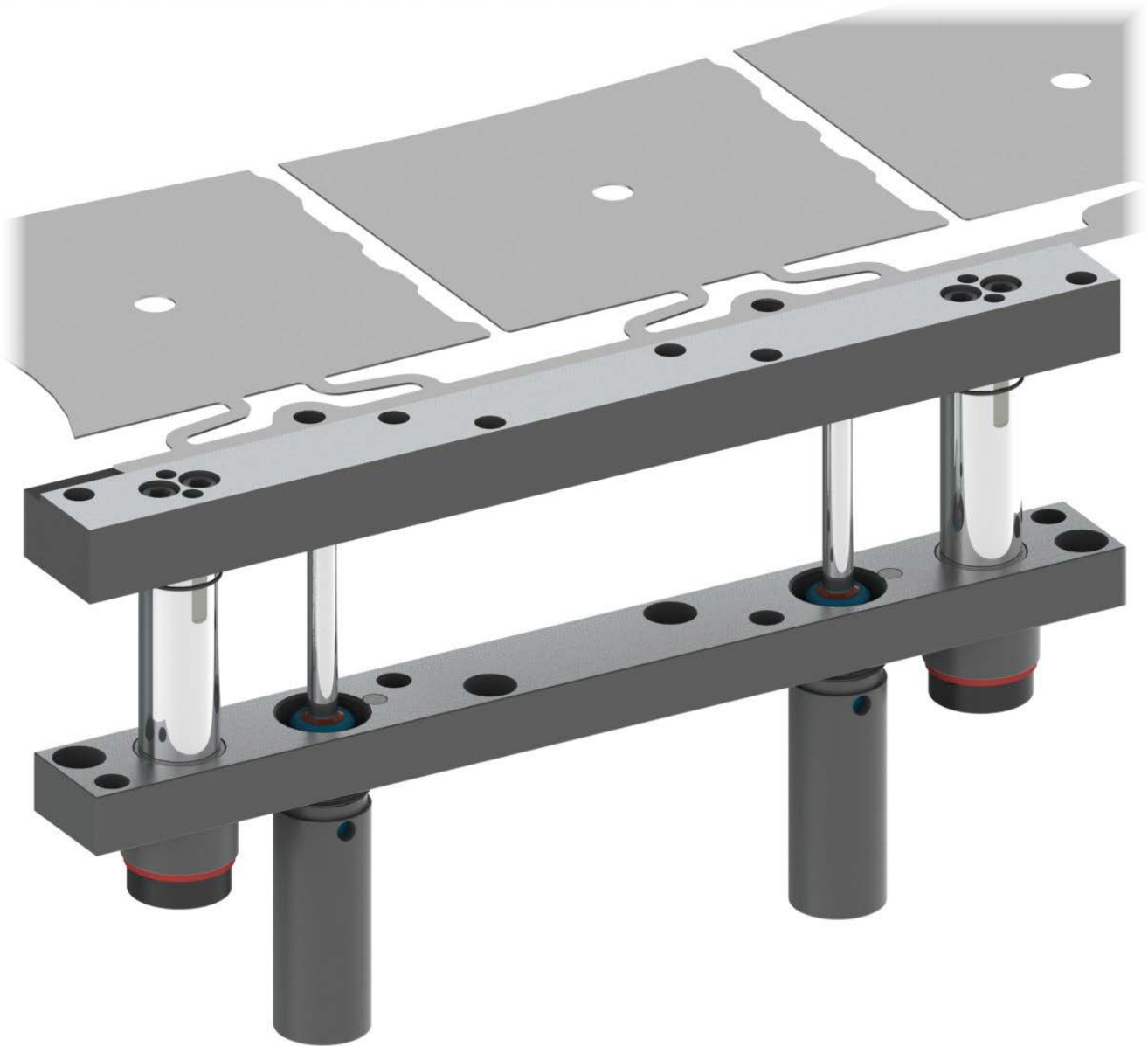
Why Use Rail Lifters



Bolt On Ready Stock Rails

*This product may be covered by one or more patents or patent applications.
See <http://www.standardlifters.com/patents.html> for details.*

Application - Stock Lifting



These standardized traveling Rail Lifters are primarily used in progressive dies to lift the sheet metal stock as it progresses through the stations of the die.

Product Scope



As small as

- 4" long Top Plates
- 4" long Bases
- .75" Guide Pins
- 1.625" Height
- .125" of Travel



As large as

- 29" long Top Plates
- 18" long Bases
- 1.25" Guide Pins
- 10" Height
- 7.25" of Travel



STANDARDLIFTERS
MAKING INNOVATION THE STANDARD®

Why Use - Rail Lifters - Pg. 3

Highly Configurable and Adjustable

Lifter Height

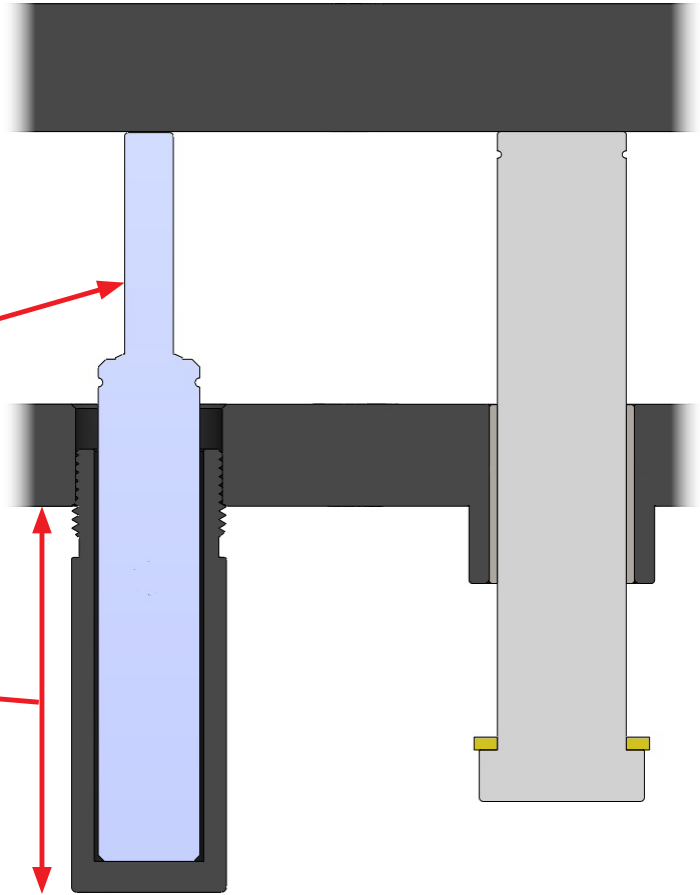
Rail Lifters can be ordered in heights of .125" increments. This provides design flexibility, but does not require the die shoe to be pocketed or shims to be fabricated.

Lifter Travel

Lifter assemblies are configured by height and stroke required, providing two design advantages:

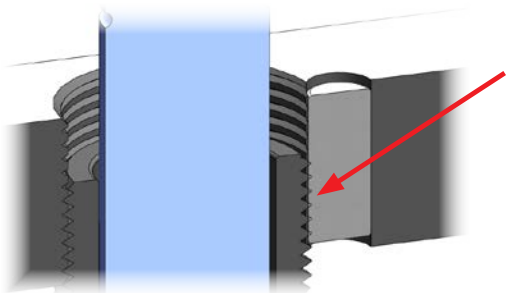
Gas Spring used is the "shortest" needed for the required travel

Minimum Spring Can protrusion below the base



Locking Dowel

Lifter Height can be adjusted anytime using SL's innovative adjustable Spring Can. Simply turn the Spring Can until desired height is reached and then lock it into place using a standard Dowel.



When the dowel is driven into the hole in the Lifter Base, it interrupts the threads on the Spring Can, thus creating a permanently locked assembly.

Drop In Gas Spring

Compatible with All Gas Spring Brands

Use your preferred brand or one that is required for the tool based on customer specifications.

Gas Spring is Easily Replaced

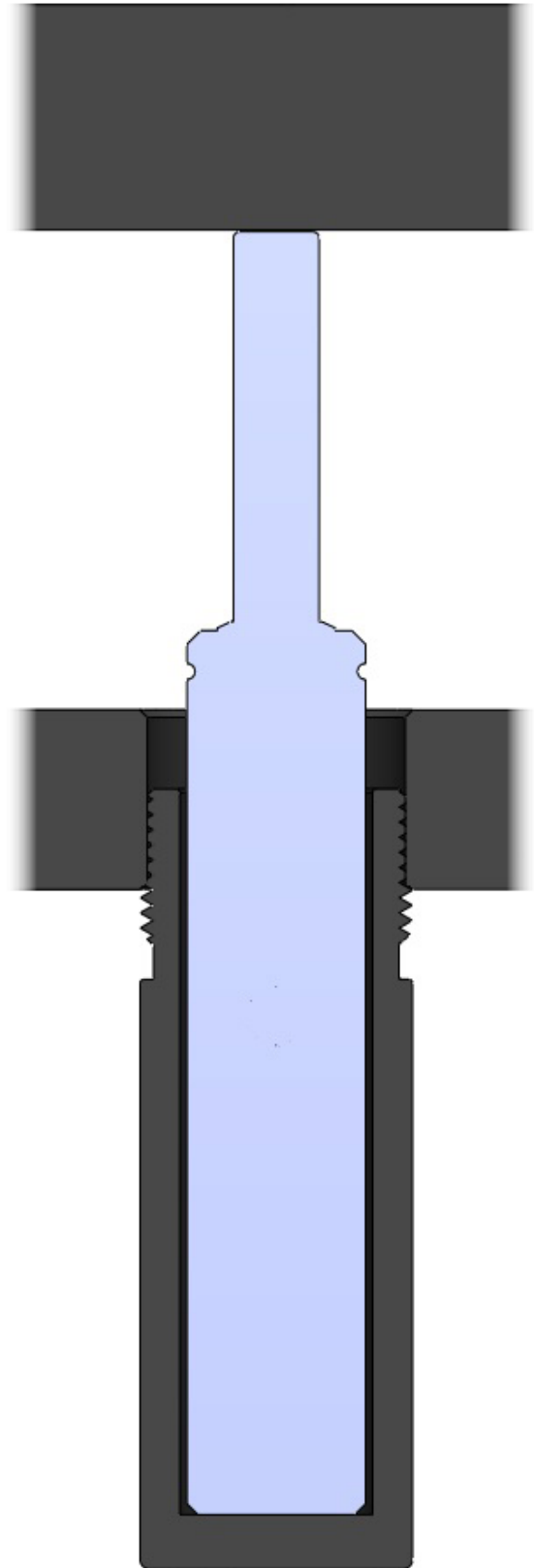
3 Simple Steps:

1. Unscrew the fasteners from one of the Guide Pins and swing the Top Plate out of the way
2. Replace the Gas Spring
3. Swing the Top Plate back over the Base and screw the fasteners back into the Guide Pin



Gas Spring is Protected

The steel Spring Can provides a level of protection for the Gas Spring. In the event of an impact, the Gas Spring is less likely to be damaged.



STANDARDLIFTERS
MAKING INNOVATION THE STANDARD[®]

Why Use - Rail Lifters - Pg. 5

Extended Bushings

Lifters can be ordered with an Extended Bushing Option. This increases the total length of the bushing by extending it further below the base.

SL recommends the use of the Extended Bushing option wherever possible.

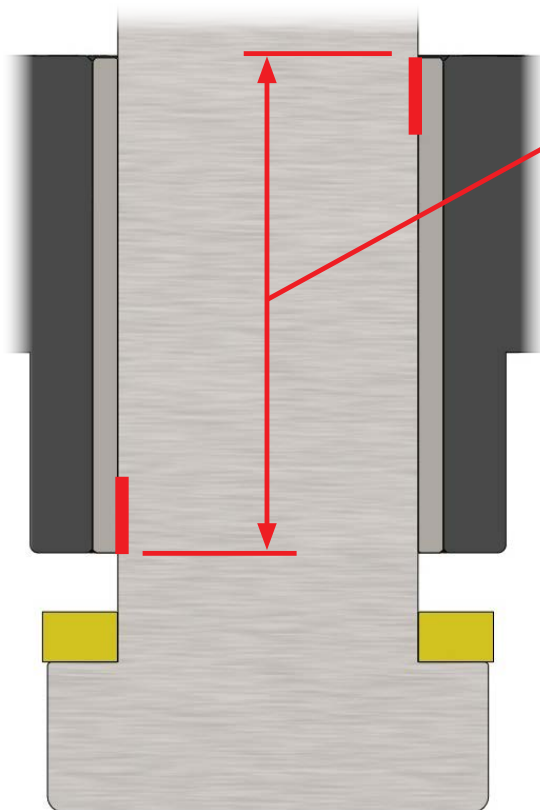
Standard



Extended



Advantages of Longer Bushings



Less Top Plate Movement

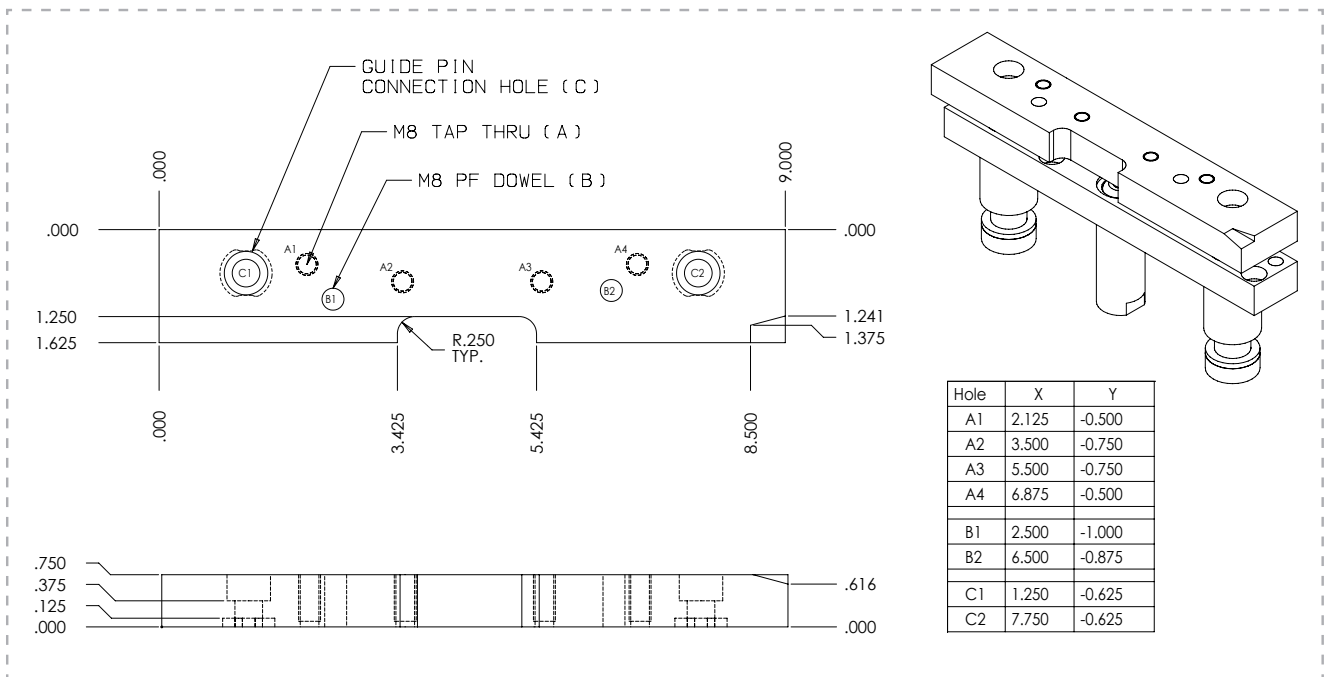
When the Top Plate is subjected to a side load the guide Pin makes contact with two primary areas (see red lines on picture to the left).

The greater the distance between these areas, the more stability the lifter will have. Longer Bushings are important on lifters with tall heights or long travel.

Increased Bushing Life

A longer bushing provides more surface area that is in contact with the Guide Pin, which extends the life of the Lifter.

Made to Order Top Plates



SL will machine all necessary holes, contours, pockets, etc., in the Top Plate for you. This option provides the following advantages:

1. High Quality

Standard Lifters uses the latest technology in machines and tooling, providing your Top Plates with accurately machined features every time. All machined entities receive a rust preventative coating through a Black Oxide Process.

2. No In-House Machining Needed

No need for a secondary Top Plate set up or scheduled time in the CNC department.

3. Bolt On Ready

The diemaker can open the box and assemble the lifter on the die shoe, and immediately install any details that attach to the Top Plate such as stock guides.

4. Consistent and Accurate

Standard Lifters machines all features including the Guide Pin connections at the same time. This ensures that all machined entities are accurately related to each other. Mistakes are typically made when the Top Plate is setup for additional machining.

Currently over 50% of all SL Lifters sold feature “Made To Order Top Plates.” These customers have realized the advantages listed above and are benefiting from them.

Note: 3D contour machining is not available

SL Rail Lifters offer Value Innovation

Purchasing components rather than manufacturing them in-house provides a number of advantages.

Reduces Shop Labor

Because Shop labor is the largest expense when building a tool, reducing labor can have the greatest impact on lowering your tooling costs. Utilizing SL's "Bolt On Ready" Rail Lifters provides you an innovative way to reduce your shop labor.

Reduces Design Time

As an "All-In-One" component, SL's Rail Lifters are an easy "Drag and Drop," into your design. This speeds up design time and decreases design errors.

Shortened Build Time = More Tools Built on Time

In today's competitive environment, shortened lead times are more common than ever. Tools utilizing SL's Rail Lifters shortens build times and helps to ensure on time deliveries.

Consistent High Quality

SL's Rail Lifters provide a robust and dependable stock lifting system for your tools. They are engineered and manufactured with high quality (Made in the USA) components that perform in and withstand today's demanding die conditions.

Easy Repair with On-Shelf Components

SL's Rail Lifters allow the Stamper to quickly and economically recover from a die crash. Standard Lifters stocks all Rail Lifter componentry, making them available for next day delivery.

Pricing

- Pricing shown below is based on using a standard A model Top Plate
- Made To Order Top Plates are quoted based on machining required
- For Extended Bushing Option - add \$5.00
- Gas Springs are NOT included, but the size required per lifter is provided on the quote from SL

Series	Base Width	Base Length	Pricing
SM12	1.25"	5.38"	\$200 - \$240
		9.00"	\$224 - \$264
		14.00"	\$283 - \$328
SM20	2.00"	4.00"	\$200 - \$240
SL19	1.90"	7.00"	\$293 - \$385
		12.00"	\$317 - \$409
		18.00"	\$445 - \$504
SL25	2.50"	6.75"	\$293 - \$396
		12.00"	\$317 - \$409
		18.00"	\$445 - \$504

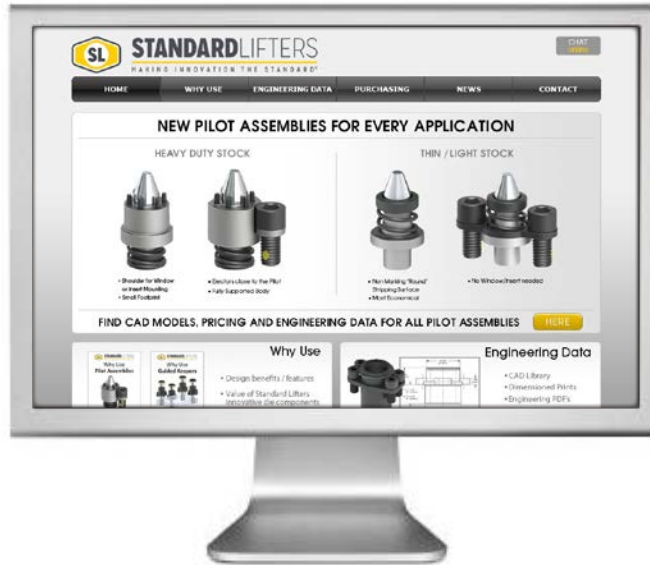
Pictures



Pictures



For New and Updated Information
www.standardlifters.com



SL STANDARDLIFTERS
 MAKING INNOVATION THE STANDARD®

Why Use Fixed Stock Guides

Simple - Economical - Retractable

This product may be covered by one or more patents or patent applications.
 See <http://www.standardlifters.com/patents.html> for details.

SL STANDARDLIFTERS
 MAKING INNOVATION THE STANDARD®

Why Use Pilot Assemblies

The New Industry Standard

This product may be covered by one or more patents or patent applications.
 See <http://www.standardlifters.com/patents.html> for details.

SL STANDARDLIFTERS
 MAKING INNOVATION THE STANDARD®

Why Use Guided Keepers

Guidance and Retention - ALL-IN-ONE

This product may be covered by one or more patents or patent applications.
 See <http://www.standardlifters.com/patents.html> for details.

SL STANDARDLIFTERS
 MAKING INNOVATION THE STANDARD®

Why Use Gas Spring Clamps

The New Industry Standard

This product may be covered by one or more patents or patent applications.
 See <http://www.standardlifters.com/patents.html> for details.

SL STANDARDLIFTERS
 MAKING INNOVATION THE STANDARD®

Why Use Rail Lifters

Bolt On Ready Stock Rails

This product may be covered by one or more patents or patent applications.
 See <http://www.standardlifters.com/patents.html> for details.