

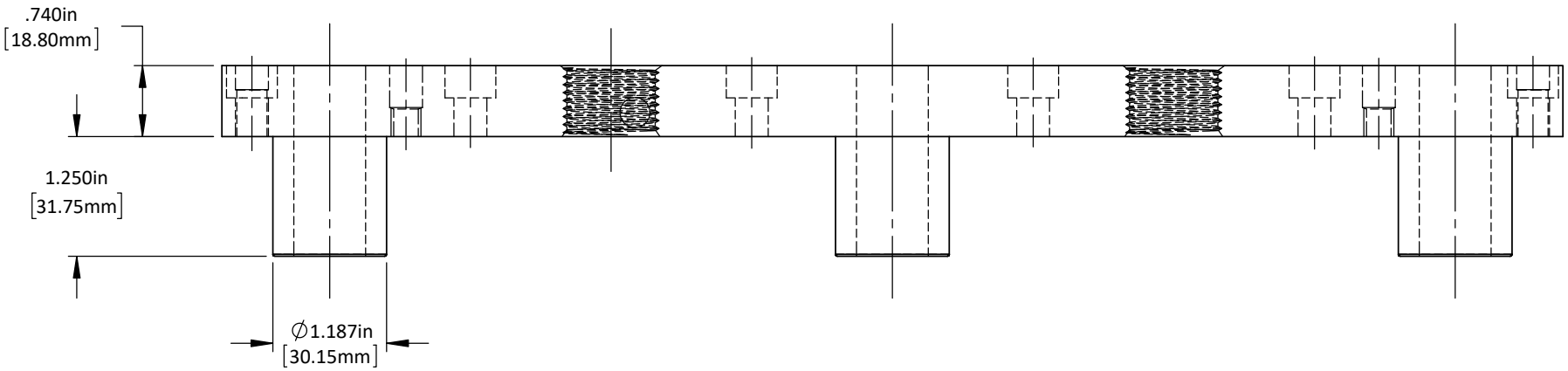
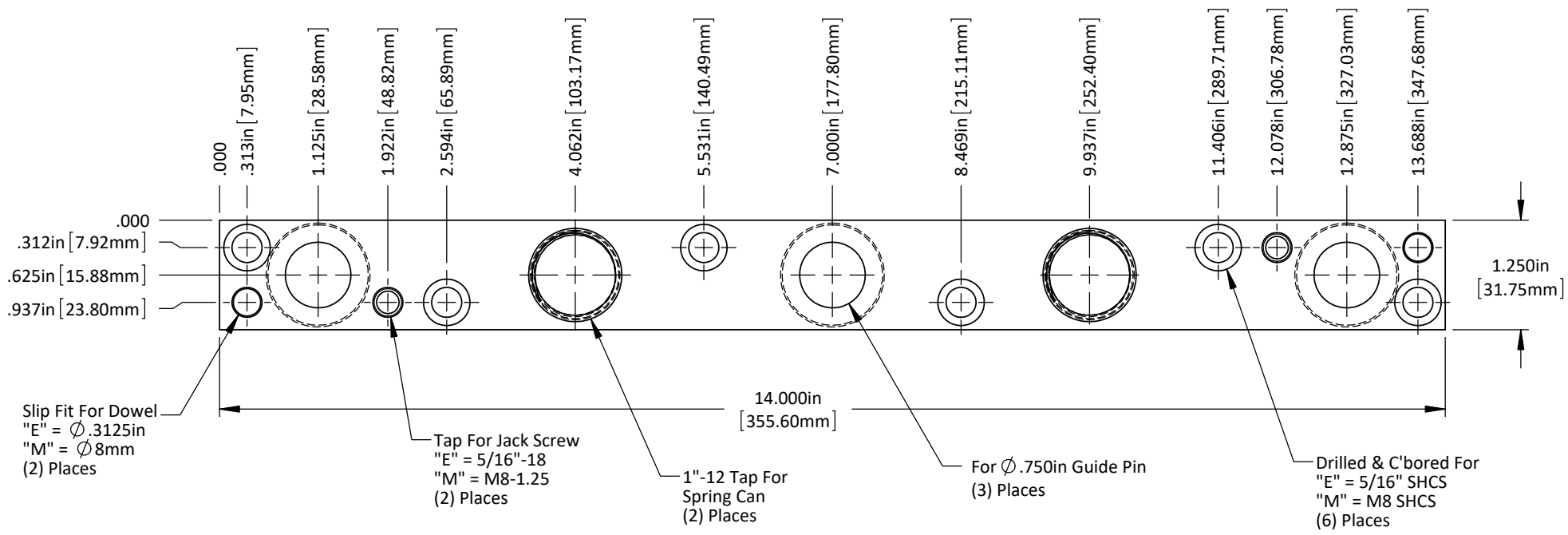
DO NOT SCALE DRAWING

REV 1

This product may be covered by one or more patents or patent applications.  
 See <http://www.standardlifters.com/patents.html> for details.

**Base-SM12-14-Machining**

**Standard Lifters Inc**

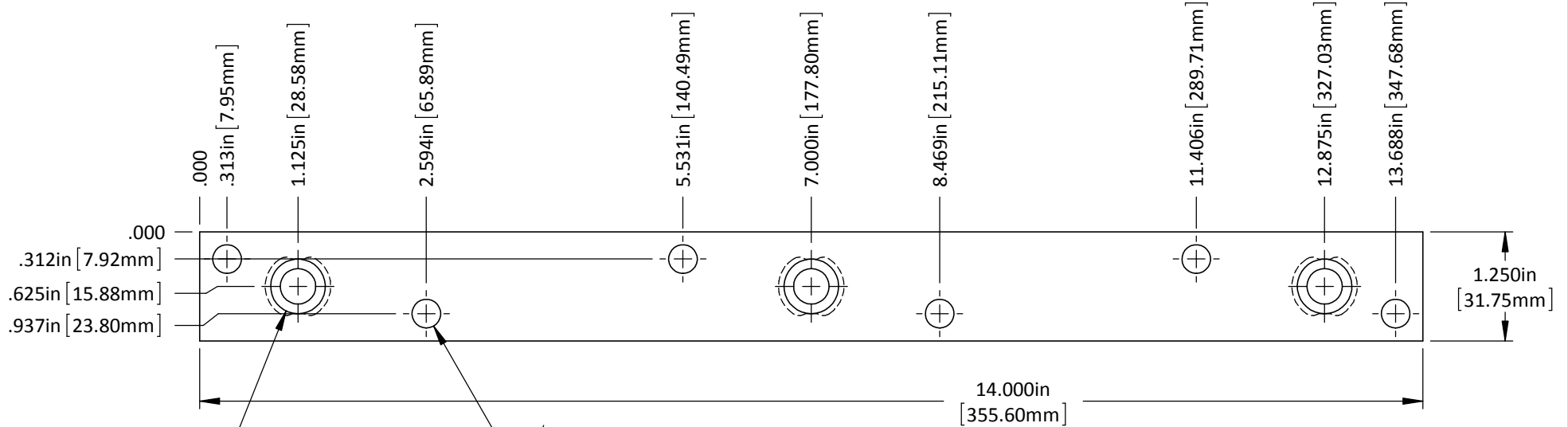


DO NOT SCALE DRAWING    REV 1

This product may be covered by one or more patents or patent applications.  
See <http://www.standardlifters.com/patents.html> for details.

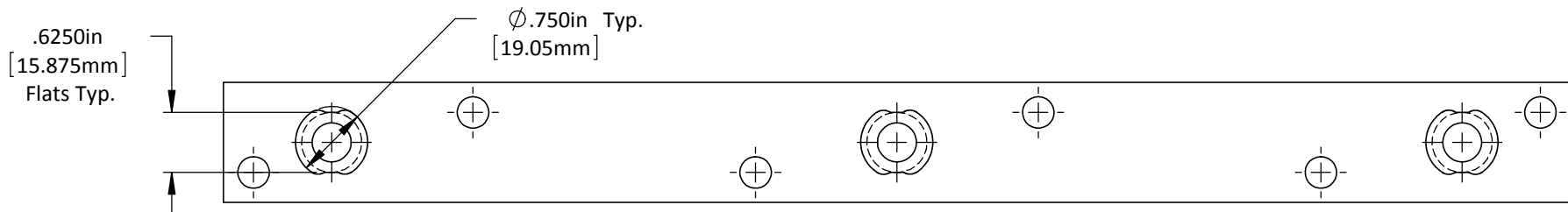
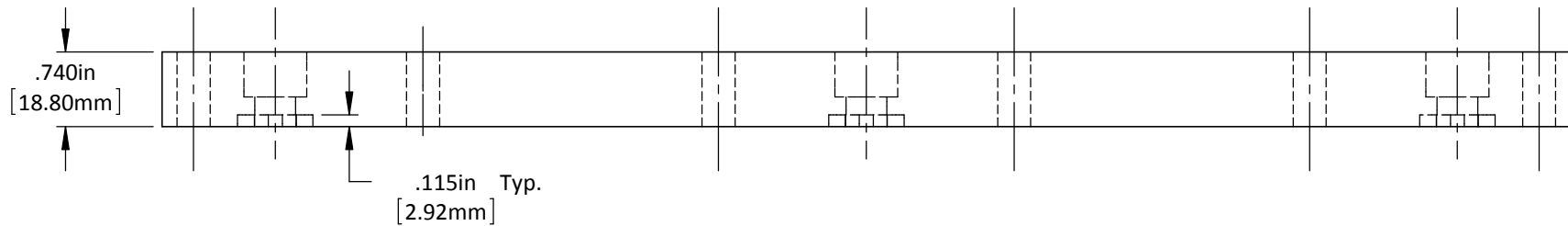
**Base-SM12-14-1.25**

**Standard Lifters Inc**

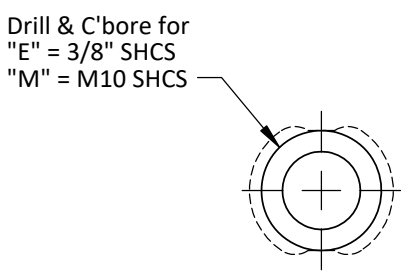
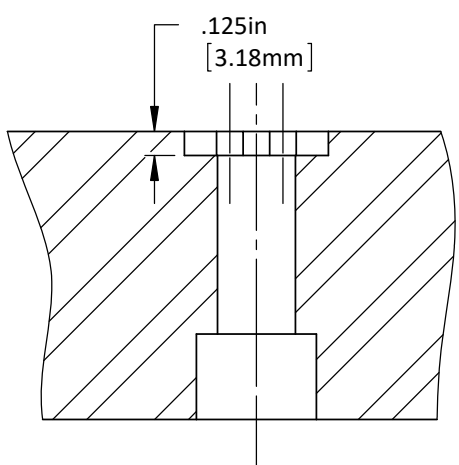
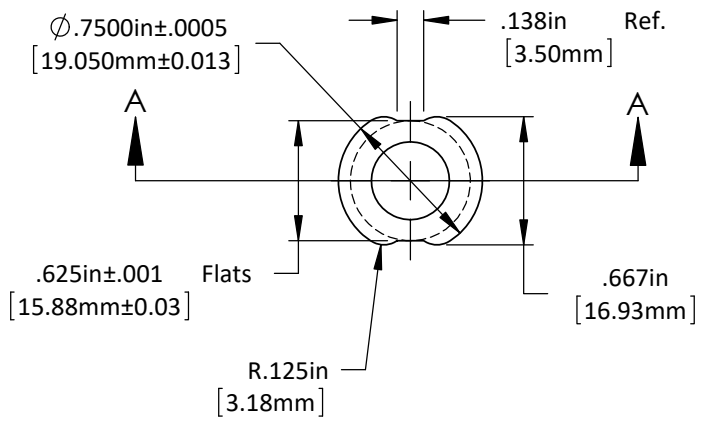


Drilled & C'bored For  
 "E" = 3/8" SHCS  
 "M" = M10 SHCS  
 (3) Places

$\phi$ .328in Thru (6) Places  
 [8.33mm]



DO NOT SCALE DRAWING	REV 1	<b>Top Plate-SM12-14-A</b> <b>STANDARD LIFTERS INC</b>
This product may be covered by one or more patents or patent applications. See <a href="http://www.standardlifters.com/patents.html">http://www.standardlifters.com/patents.html</a> for details.		

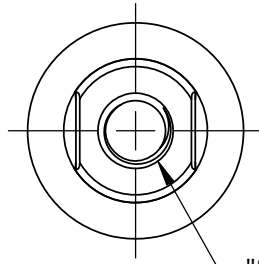


DO NOT SCALE DRAWING    REV 1

This product may be covered by one or more patents or patent applications.  
 See <http://www.standardlifters.com/patents.html> for details.

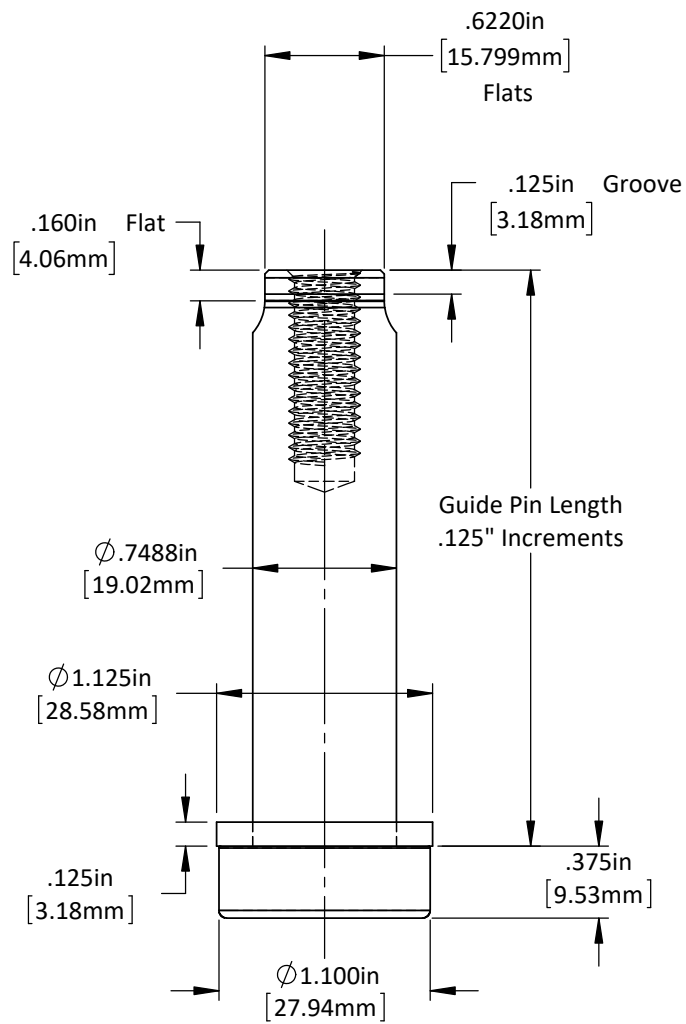
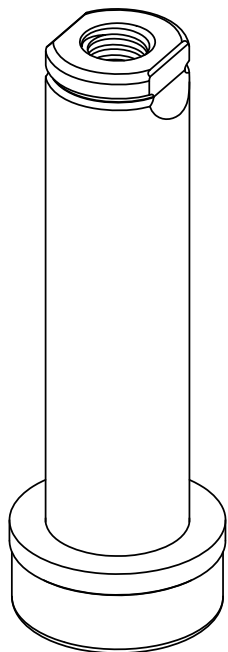
**Guide Pin GK75-Machining**

**Standard Lifters Inc**



"E" = 3/8-16 Tap  
1.00in Dp.

"M" = M10-1.5 Tap  
25mm Dp.



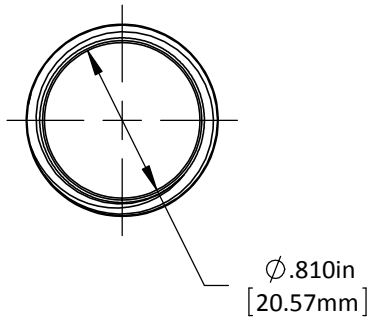
DO NOT SCALE DRAWING

REV 1

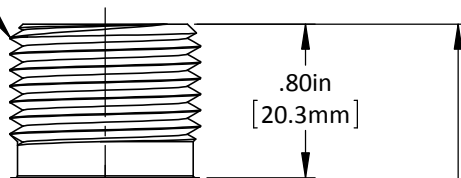
This product may be covered by one or more patents or patent applications.  
See <http://www.standardlifters.com/patents.html> for details.

**Guide Pin GK75**

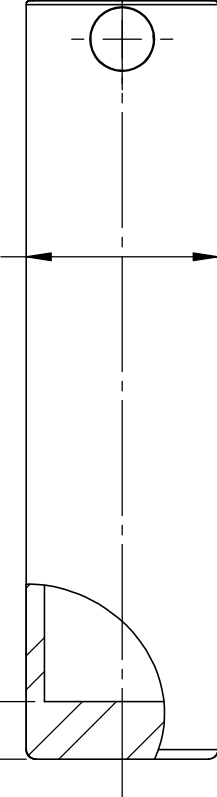
**Standard Lifters Inc**



1"-12 Thread

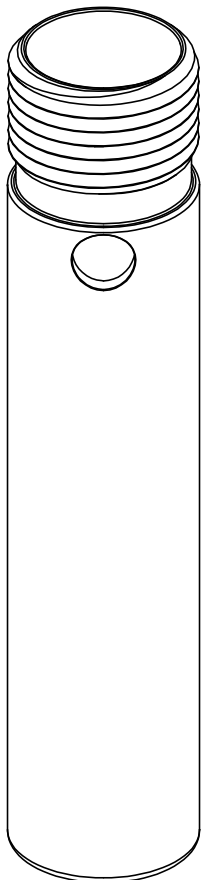


$\phi 1.000\text{in}$   
[25.40mm]



Spring Can  
Overall Length  
1.75" Min. - 9.25" Max.  
.375" Increments

$.300\text{in}$   
[7.62mm]



DO NOT SCALE DRAWING    REV 1  
This product may be covered by one or more patents or patent applications.  
See <http://www.standardlifters.com/patents.html> for details.

**Spring Can-MSR75**  
**STANDARD LIFTERS INC**